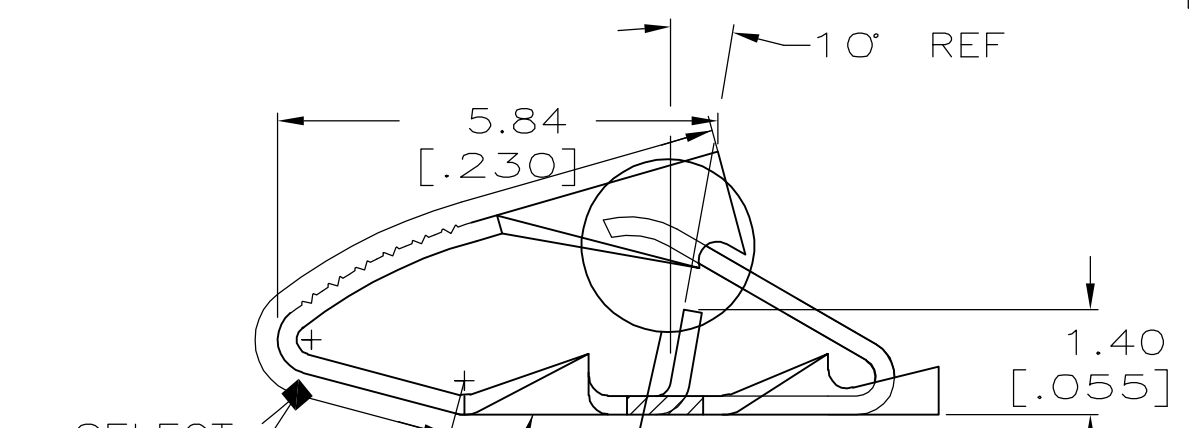
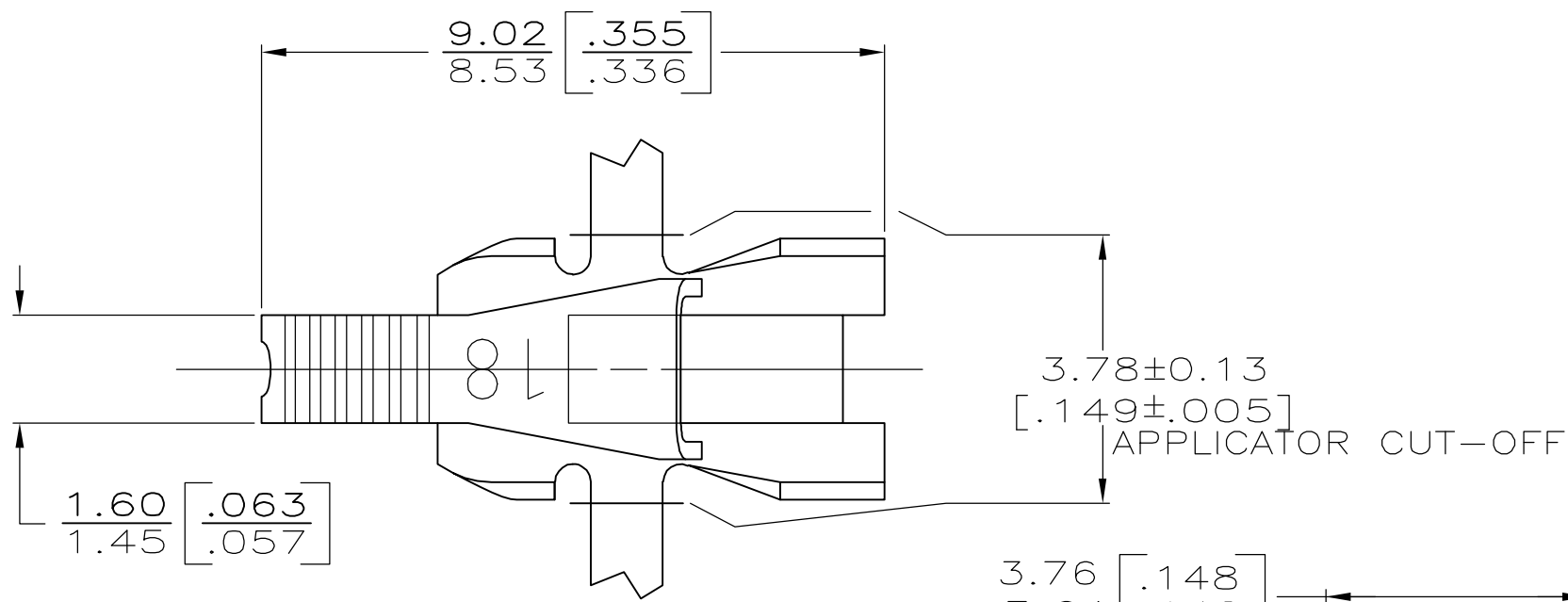


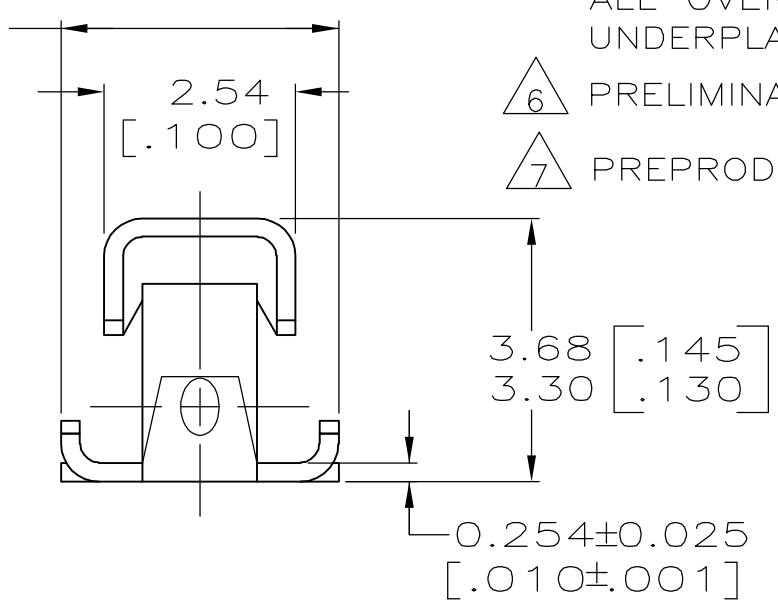
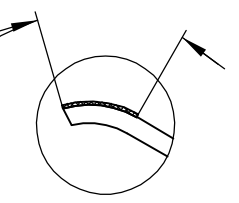
THIS DRAWING IS UNPUBLISHED. RELEASED FOR PUBLICATION  
 © COPYRIGHT BY TYCO ELECTRONICS CORPORATION. ALL RIGHTS RESERVED.

LOC	DIST	REVISIONS					
AF	50	P	LTR	DESCRIPTION	DATE	DWN	APVD
			E1	REL PER ECR 06-000469	13JAN06	JR	KR



SELECT TIN-LEAD  
-1 & -3 ONLY  
 3 5

SELECT GOLD  
-1 & -3 ONLY  
 3 5



- 1 CONTINUOUS STRIP ON REELS WITH TERMINALS LOCATED ON 6.10±0.08 [.240±.003] CENTERS.
- 2 IDENTIFICATION NUMBER 18 FOR MAGNET WIRE RANGE.
- 3 0.000762[.000030] MIN SELECT GOLD ON ONE SIDE AS SHOWN, 0.00127[.000050] MIN SELECT TIN-LEAD ON BOTH SIDES AS SHOWN ALL OVER 0.00127[.000050] MIN NICKEL UNDERPLATE
- 4 0.002032 [.000080] MIN TIN OVER 0.00127 [.000050] MIN NICKEL WITH ANTI-FRETTING LUBE ON POKE-IN LEAF AREA.
- 5 0.000762[.000030] MIN SELECT GOLD ON ONE SIDE AS SHOWN, 0.00127[.000050] MIN SELECT TIN ON BOTH SIDES AS SHOWN ALL OVER 0.00127[.000050] MIN NICKEL UNDERPLATE
- 6 PRELIMINARY - NOT FOR PRODUCTION.
- 7 PREPRODUCTION - FASR REQUIRED

0.10-0.25mm [#38-#30] AWG	5	7	63844-3
	4	6	63844-2
	3		63844-1
COPPER MAGNET WIRE RANGE	FINISH	PART NO.	

THIS DRAWING IS A CONTROLLED DOCUMENT.		DWN R.GRZYBOWSKI 3/MAY/95	Tyco Electronics Corporation Harrisburg, Pa 17105-3608	
DIMENSIONS: MM [ INCHES ]		CHK MICHAEL S. FEHER 3/MAY/95	NAME	
TOLERANCES UNLESS OTHERWISE SPECIFIED:		APVD TL SHUTTER 3/MAY/95	PRODUCT SPEC	
0 PLC ± -		108-2016		
1 PLC ± -		APPLICATION SPEC		
2 PLC ± 0.25 [.010]		114-2047		
3 PLC ± -		WEIGHT -		
4 PLC ± -		SIZE A3		
ANGLES ± -		CAGE CODE 00779		
FINISH SEE TABLE		DRAWING NO C-63844		
MATERIAL H02 BRASS		RESTRICTED TO -		
CUSTOMER DRAWING		SCALE 10:1 SHEET 1 OF 1 REV E1		